



FEATURES

- Broadband power splitter (470-860 MHz)
- Low VSWR
- Low insertion loss
- Up to 12 outputs
- Pressurizable
- Available equal or unequal splitting power ratio
- Additional tuning unit (Line Match) can be used to optimize the input impedance of the whole system on site.

ELECTRICAL DATA

WORKING BAND:	470-860 MHz
BANDWIDTH:	UHF IV/V band
VSWR:	≤ 1.06:1 (-30.71 dB)
IMPEDANCE:	50 Ohm balanced
INSERTION LOSS:	0.05 dB
POWER RATING:	See table
NUMBER OF WAYS:	See table
SPLITTING POWER RATIO:	Equal or Unequal

MECHANICAL DATA

MATERIALS:	External body in polished brass, internal lines in aluminum or brass, inner conductors in brass, teflon isolators, silicon O-rings
MOUNTING:	Directly on supporting structure via M8/M10 holes
MOUNTING BRACKETS:	Optional XDV - Couple of brackets for pole from 40 to 114mm (4") XDVS - Couple of fixed brackets 130mm length with M10 holes
TREATMENTS:	Silver-plated internal lines and connections
PRESSURIZATION:	5.0 psi
CONNECTORS:	See table
DIMENSIONS:	See table
WEIGHT:	See table
PACKING DIMENSIONS:	Cardboard box
FINISHIGN:	RAL7030

Specification are subject to change without notice

STANDARD TYPES

PRODUCT CODE	INPUT CONNECTOR	WAY	OUTPUT CONNECTOR	DIMENSION				POWER RATING (rms KW)			WIEGHT (kg)	FIGURE
				A (mm)	A (inch)	B (mm)	B (inch)	470 MHz	665 MHz	860 MHz		
DV1616B723B1	DIN 7/16" f.	2	DIN 7/16" f.	385	15.2	90	3.5	2.0	1.8	1.5	1.8	1
DV7816B723B1	EIA 7/8"	2	DIN 7/16" f.	400	15.7	90	3.5	3.1	2.9	2.5	2.2	2
DV7878B723B1	EIA 7/8"	2	EIA 7/8"	490	19.3	122	4.8	3.1	2.9	2.5	3.5	3
DV5878B723B1	EIA 1 5/8"	2	EIA 7/8"	490	19.3	122	4.8	6.2	5.8	5.0	3.8	3
DV5858B723B1	EIA 1 5/8"	2	EIA 1 5/8"	465	18.3	115	4.5	7.5	6.8	5.5	4.0	5
DV3858B723B1	EIA 3 1/8"	2	EIA 1 5/8"	580	22.8	290	11.4	15.0	13.6	11.0	9.0	4
DV3838B723B2	EIA 3 1/8"	2	EIA 3 1/8"	490	19.3	115	4.5	24.0	20.0	18.0	15.0	4
DV4238B723B	IEC 4 1/2"	2	EIA 3 1/8"	730	28,7	455	17,9	36.0	32.0	30.0	23.5	4
DV6842B725B	EIA 6 1/8"	2	IEC 4 1/2"	555	21.9	345	13.6	70.0	60.0	50.0	30	4
DV6868B723B	EIA 6 1/8"	2	EIA 6 1/8"	555	21.9	505	19.9	70.0	60.0	50.0	35	4
DV1616B733B1	DIN 7/16" f.	3	DIN 7/16" f.	385	15.2	90	3.5	2.0	1.8	1.5	1.8	1
DV7816B733B1	EIA 7/8"	3	DIN 7/16" f.	400	15.7	90	3.5	3.1	2.9	2.5	2.2	2
DV7878B733B1	EIA 7/8"	3	EIA 7/8"	490	19.3	190	7.5	3.1	2.9	2.5	4.2	3
DV5878B733B1	EIA 1 5/8"	3	EIA 7/8"	555	21.9	195	7.7	7.5	5.8	6.5	4.8	3
DV5858B733B1	EIA 1 5/8"	3	EIA 1 5/8"	555	21.9	195	7.7	7.5	5.8	6.5	6.1	3
DV3858B733B3	EIA 3 1/8"	3	EIA 1 5/8"	630	24.8	290	11.4	22.5	20.0	16.6	14.5	4
DV4238B733B3	IEC 4 1/2"	3	EIA 3 1/8"	630	24.8	290	11.4	36.0	32.0	30.0	16.5	4
DV1616B743B1	DIN 7/16" f.	4	DIN 7/16" f.	385	15.2	90	3.5	2.0	1.8	1.5	2.0	1
DV7816B743B1	EIA 7/8"	4	DIN 7/16" f.	400	15.7	90	3.5	3.1	2.9	2.5	2.3	2
DV7878B743B1	EIA 7/8"	4	EIA 7/8"	490	19.3	190	7.5	3.1	2.9	2.5	4.2	3
DV5816B743B	EIA 1 5/8"	4	DIN 7/16" f.	490	19.3	190	7.5	7.5	6.8	5.5	4.2	3
DV5878B743B1	EIA 1 5/8"	4	EIA 7/8"	555	21.9	195	7.7	7.5	6.8	5.5	5.1	3
DV5858B743B1	EIA 1 5/8"	4	EIA 1 5/8"	555	21.9	195	7.7	7.5	6.8	5.5	6.1	3
DV3878B743B1	EIA 3 1/8"	4	EIA 7/8"	630	24.8	290	11.4	12.4	11.6	10.0	13.0	4
DV3858B743B1	EIA 3 1/8"	4	EIA 1 5/8"	630	24.8	290	11.4	24.0	20.0	18.0	14.3	4
DV4258B744B1	IEC 4 1/2"	4	EIA 1 5/8"	635	25.0	318	12.5	30.0	27.2	22.0	20.0	4
DV4238B743B	IEC 4 1/2"	4	EIA 3 1/8"	737	29.0	555	21.9	36.0	32.0	30.0	25.0	4
DV7878B753B1	EIA 7/8"	5	EIA 7/8"	490	19.3	190	7.5	3.1	2.9	2.5	5.5	3
DV5878B753B1	EIA 1 5/8"	5	EIA 7/8"	490	19.3	190	7.5	7.5	6.8	5.5	6.0	3
DV3878B753B	EIA 3 1/8"	5	EIA 7/8"	630	24.8	260	10.2	15.5	14.5	12.5	13.5	4
DV3858B754B	EIA 3 1/8"	5	EIA 1 5/8"	630	24.8	290	11.4	24.0	20.0	18.0	14.5	4
DV1616B764B2	DIN 7/16" f.	6	DIN 7/16" f.	385	15.2	90	3.5	2.0	1.8	1.5	2.2	3
DV7816B764B2	EIA 7/8"	6	DIN 7/16" f.	400	15.7	120	4.7	3.1	2.9	2.5	2.7	3
DV7878B764B2	EIA 7/8"	6	EIA 7/8"	490	19.3	190	7.5	3.1	2.9	2.5	7.2	3
DV5816B764B1	EIA 1 5/8"	6	DIN 7/16 f.	490	19.3	120	4.7	7.5	6.8	5.5	8.6	3
DV5878B764B1	EIA 1 5/8"	6	EIA 7/8"	490	19.3	180	7.1	7.5	6.8	5.5	8.8	3
DV5858B764B1	EIA 1 5/8"	6	EIA 1 5/8"	490	19.3	180	7.1	7.5	6.8	5.5	10.1	3
DV3816B763B1	EIA 3 1/8"	6	DIN 7/16 f.	630	24.8	255	10.0	12.0	10.8	9.0	14.8	4
DV3878B763B1	EIA 3 1/8"	6	EIA 7/8"	630	24.8	255	10.0	18.6	17.4	15.0	14.8	4
DV3858B764B1	EIA 3 1/8"	6	EIA 1 5/8"	630	24.8	290	11.4	24.0	20.0	18.0	14.3	4
DV4258B764B	IEC 4 1/2"	6	EIA 1 5/8"	730	28.7	350	13.8	36.0	32.0	30.0	25.0	4
DV4238B764B	IEC 4 1/2"	6	EIA 3 1/8"	730	28.7	370	14.6	36.0	32.0	30.0	28.0	4
DV1616B784B4	DIN 7/16" f.	8	DIN 7/16" f.	490	19.3	190	7.5	2.0	1.8	1.5	7.2	3
DV7816B784B3	EIA 7/8"	8	DIN 7/16" f.	490	19.3	190	7.5	3.1	2.9	2.5	7.2	3
DV7878B784B1	EIA 7/8"	8	EIA 7/8"	490	19.3	190	7.5	3.1	2.9	2.5	8.2	3
DV5816B784B	EIA 1 5/8"	8	DIN 7/16" f.	490	19.3	260	10.2	7.5	6.8	5.5	19.5	3
DV5878B784B1	EIA 1 5/8"	8	EIA 7/8"	490	19.3	190	7.5	7.5	6.8	5.5	8.6	3
DV5858B784B1	EIA 1 5/8"	8	EIA 1 5/8"	490	19.3	190	7.5	7.5	6.8	5.5	10.0	3
DV3816B784B	EIA 3 1/8"	8	DIN 7/16" f.	630	24.8	260	10.2	16.0	14.4	12.0	19.5	4
DV3878B784B1	EIA 3 1/8"	8	EIA 7/8"	595	23.4	260	10.2	24.0	20.0	18.0	19.5	4
DV4278B784B1	IEC 4 1/2"	8	EIA 7/8"	730	28.7	370	14.6	24.8	23.2	20.0	28.0	4
DV3816B7A3B	EIA 3 1/8"	12	DIN 7/16" f.	710	27.9	260	10.2	24.0	20.0	18.0	14.2	4
DV3878B7A3B	EIA 3 1/8"	12	EIA 7/8"	710	27.9	260	10.2	24.0	20.0	18.0	15.6	4

Specification are subject to change without notice

POWER SPLITTER DIMENSIONAL DETAILS

FIGURE "1"

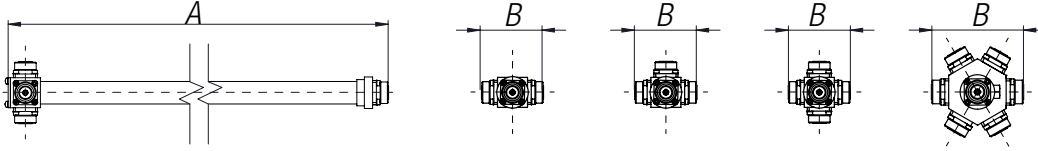


FIGURE "2"

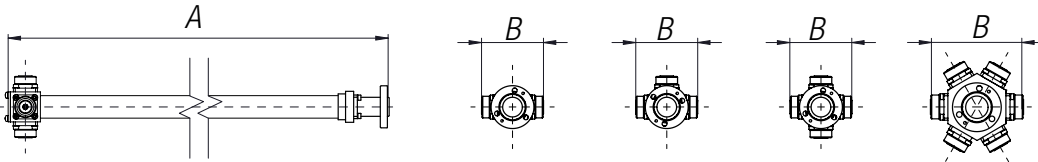


FIGURE "3"

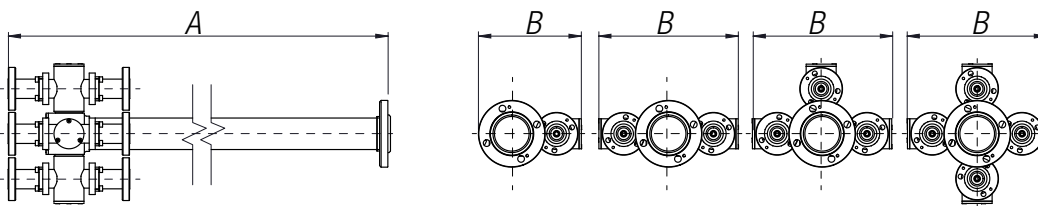


FIGURE "4"

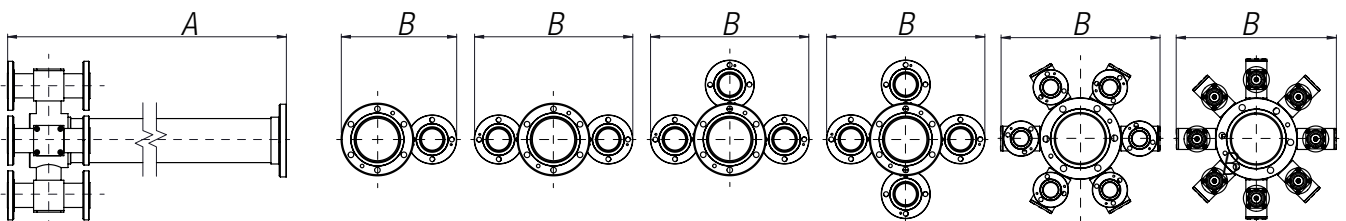
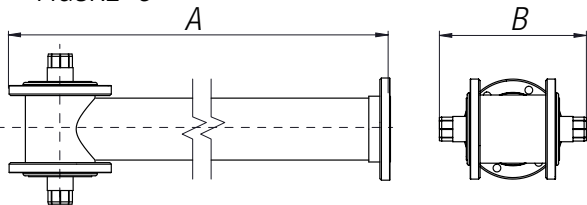
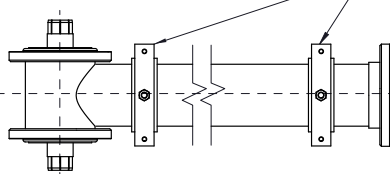


FIGURE "5"

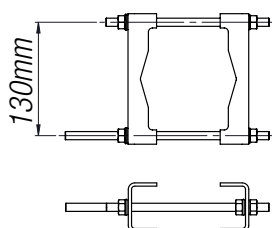


MOUNTING VIA
2 HOLES M8/M10

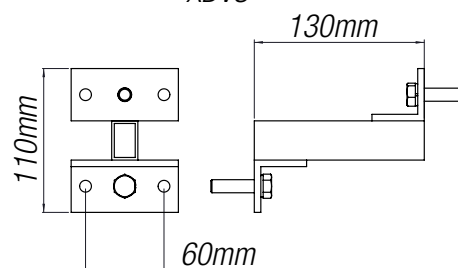


OPTIONAL BRACKETS

XDV



XDVS



Specification are subject to change without notice