

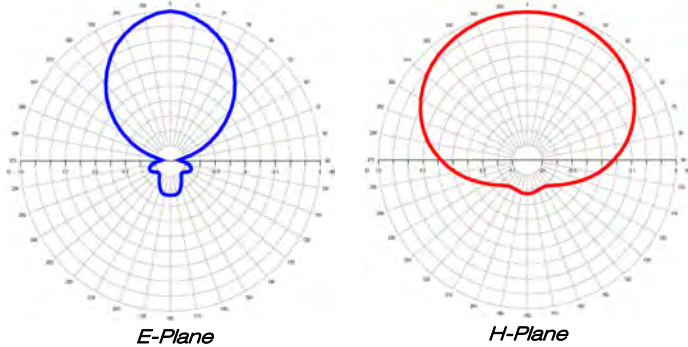
**ELECTRICAL DATA**

**WORKING BAND:** 87.5÷108 MHz  
**BANDWIDTH:** FM band  
**GAIN:** 4.5 dBd (6.7 dBi)  
**VSWR (worst value):** ≤ 1.2:1 (-20.8 dB)  
**POLARIZATION:** vertical (or horizontal)  
**IMPEDANCE:** 50 Ohm unbalanced  
**HALF POWER BEAMWIDTH:**  
 E-Plane - 74°  
 H-Plane - 152°

**LIGHTNING PROTECTION:** all metal parts DC grounded including inner conductors

**AVAILABLE VERSIONS AND CODE:**

- ADP0102410 - EIA 7/8" flange - max 5000 W
- ADP0102411 - DIN 7/16 female connector - max 3000 W
- ADP0102412 - N female connector - max 800 W
- ADP0102420 - EIA 7/8" flange - max 5000 W
- ADP0102421 - DIN 7/16 female connector - max 3000 W
- ADP0102422 - N female connector - max 800 W



**ADP 01 02 4xx**

**VHF**  
**Band FM**  
 Radio Broadcasting

Antenna a pannello con dipolo.  
 Irradiazione direttiva.  
 Adatta per sistemi collineari FM.  
 Banda larga 87.5 ÷ 108 MHz  
 Smontabile.  
 Pressurizzabile.

*Panel antenna with dipole.  
 Directional irradiation pattern.  
 Suitable for FM arrays.  
 Broadband 87.5 ÷ 108 MHz  
 Demountable.  
 Pressurizable.*

**MECHANICAL DATA**

**MATERIALS:**

Dipole and internal lines in aluminium, reflecting grid in aluminium (models ADP010241x) or hot dip galvanized (models ADP010242x), teflon isolators, silicon O-Rings

**MOUNTING:** directly on supporting structure

**MOUNTING BRACKETS:** optional (code XZACP) for Ø 50÷114mm. pipe

**ICING PROTECTION:** optional ABS radome (code XRASD)

**TREATMENTS:** dipole military grade treated MIL-C-5541, silver-plated internal lines and connector

**PRESSURIZATION:** 5.0 psi

**ANTENNA DIMENSIONS:** 1825x1275x1100 mm

**WEIGHT:**

- ADP010241x - 15 Kg
- ADP010242x - 24 Kg

**WIND SURFACE:** 0.47 m<sup>2</sup> front - 0.39 m<sup>2</sup> side

**WIND LOAD (at 160Km/h and 30° C air temperature):**

81.19 Kg front - 61.64 Kg side

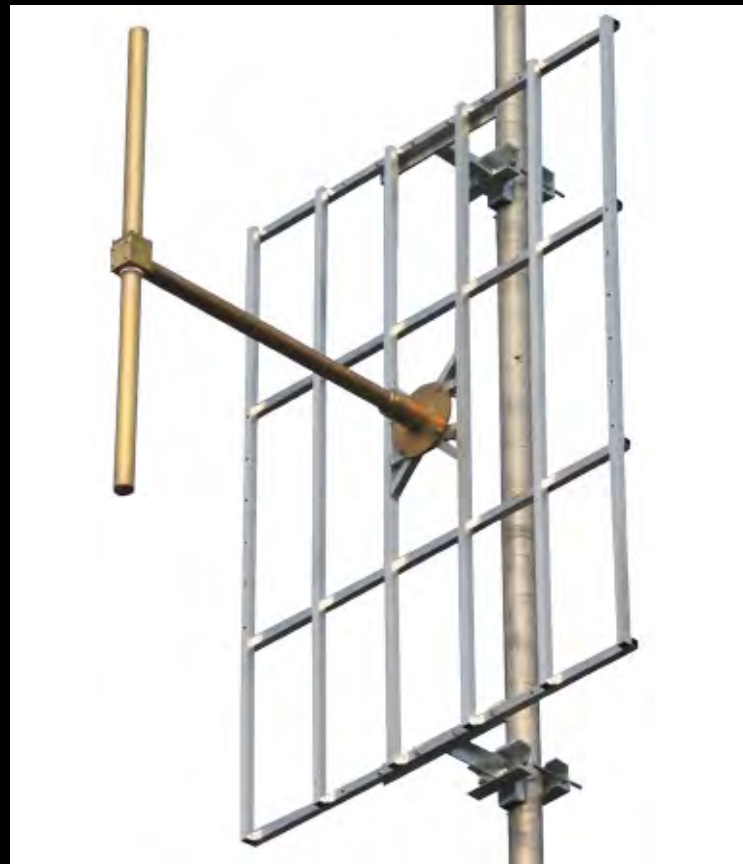
**SURVIVAL WIND:** 220Km/h

**PACKING DIMENSIONS:**

reflecting grid: box 1830x1280x80 mm  
 dipole: box 1140x300x220 mm  
 21 Kg gross

**SPECIAL FEATURES:** additional side ailerons

- ADP0102510 - as ADP0102410 with side ailerons
- ADP0102511 - as ADP0102411 with side ailerons
- ADP0102512 - as ADP0102412 with side ailerons



**ARRAY DATA**

BAY	PANEL PER BAY	SYSTEM GAIN (dBd)	GAIN TIMES <sup>1</sup>	WEIGHT (Kg) <sup>2,4</sup>	SYSTEM HEIGHT (mt)	WIND LOAD (Kg) <sup>3</sup>
2	1	7.5	5.62	45	4.5	170
4	1	10.5	11.22	85	9.9	340
6	1	12.3	16.98	126	15.3	510
8	1	13.5	22.39	188	20.7	680
12	1	15.3	33.88	272	31.5	1020

1 - gain referred at mid band -1° null filling and electrical tilt not take into account  
 2 - mounting hardware not take into account  
 3 - 160Km/h wind and 30° C air temperature  
 4 - Weight referred to ADP010241x models